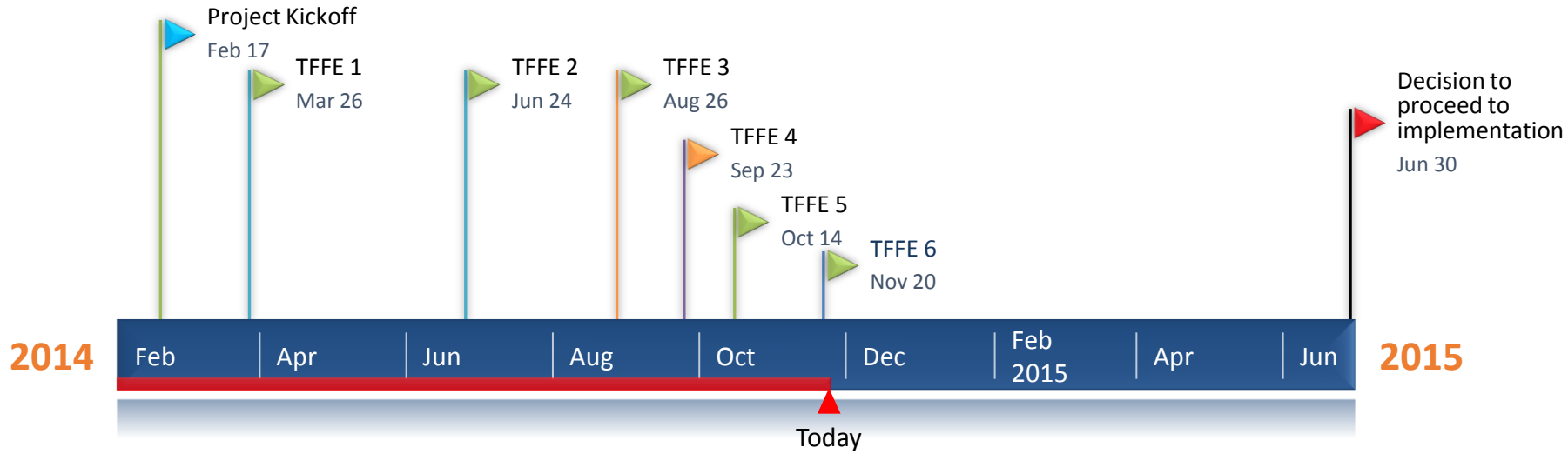




# Task Force on Flexible Education

Updated Project Timeline - November 24, 2014



**Pre-launch phase** 30 days Feb 17 - Mar 28

**Research and initial community engagement** 110 days Mar 31 - Aug 31

**Working group strategy, planning and structure** 60 days Sep 1 - Nov 21

**Working group processes** 90 days Nov 26 - Mar 31

**Initial draft report based on working groups** 45 days Apr 1 - Jun 2

**Final report and delivery to VPA** 20 days Jun 3 - Jun 30